

Jungle Times

Independent Newsletter of Danau Girang Field Centre, Est. 2008



Issue No. 135:
October + November 2020

*Photo of the Month Credit:
Richard Burger*

Inside This Issue:

- Page 2: Regrow Borneo Update
- Page 3: Leopard Cat Project Update
- Page 4: Python Project Update
- Page 5: Health at the Edge Update
- Page 6: Publication of Note
- Page 7: Photo of the Month



Find us on:
facebook.



Follow us on
Instagram

Regrow Borneo Update

Currently we have 3 sites opened. Ladang, Kaboi Lake and Kaboi Stumping.

In Ladang, the KOPEL team has recently finished doing maintenance. The team has finished mapping the botanic plot there and have taken measurement of all trees.

In Kaboi Stumping, the team have finished cleaning up the area, but they have not started planting there yet. However, the site is now ready, which is a great development!

If you want to know more, then you can read the pilot annual report here: <https://tinyurl.com/y7zjkcft>



Leopard Cat Project Update

Initially Amanda and the rest of the team were actively tracking 3 male leopard cats (Lincah, Bulan and Bintang) after one got predated (Laju) by a python. They managed to retrieve its collar and will be collaring another individual once the flood settles at the beginning of next year. There was a short flooding in mid-August, where Lincah was lost, however he did accumulate 6 months of data.

Sabah restricted its movement control order in October due to a spike in COVID cases after the state election, so tracking got delayed for two weeks. Still, Bulan has been tracked the longest. He was caught in April and has provided complete downloads for the past 7 months.

The team has now stopped tracking for both cats and will proceed to recapture these individuals on night searches. As for Bintang, 4 months of data has been accumulated from him since June, but he was lost in November together with Bulan due to the flooding. His collar is possibly still on, so we'll be doing an intensive search this month.



Python Project Update

Rich has tagged 13 pythons with VHF in the last 10 months and is currently tracking 10 animals. 6 animals in plantation and 4 in the forest. So, things look promising! He is also testing out 2 new and improved external GPS devices, and has just deployed one on a tagged python. He is hoping that we can get a nice comparison of behavior before and after having an external device attached and see whether/how a GPS can improve the spatial data collected compared to traditional VHF.

He is also looking into how he can use our drone to image and 3D map the forest to look at habitat selection within telemetered python home ranges and with capture data along surveyed riverbanks.

He is having some success doing night drives by car deep in the plantation, and tentatively now it looks like most of the animals he is capturing in the plantation tend to have very high body condition compared with forested areas. Lots of oil filled rats to fatten them up. Rich has now sampled 158 individual animals.



Health at the Edge Update

In between movement control restrictions in Sabah, our team at the Health at the Edge Project (H@EP) visited two of our neighboring plantation estates along the Kinabatangan river. There, they conducted interviews with plantation staff to learn more about the presence of domestic animals living in the area and collected biological samples from domestic cats in order to evaluate the health status of the population. At the same time, the team selected and tagged a few individuals with GPS trackers, so that they can provide better information about their whereabouts. This is the first time that GPS trackers have been used in domestic cats in Borneo, and we expect to get interesting information about their movements within the plantation, which will give us an idea of the potential interactions with other wild carnivores, such as civets and leopard cats.

We also have exciting news that go beyond the border: Liesbeth Frias, our former research associate and co-leader of the H@EP, has left DGFC to start a new adventure as a postdoctoral fellow at the Nanyang Technological University in Singapore, one of the top 5 research institutes in Asia. Her research project will evaluate changes in rodent community composition driven by anthropogenic disturbance, and their impacts on rodent parasites. This is not only a great achievement for Liz, but it is also a good opportunity for DGFC and the H@EP to expand collaborations with other institutions in the ASEAN region. We wish her all the best and look forward to see what comes next!



Publication of Note

An observation on the ecology and behaviour of *Metallyticus splendidus* on a dead dipterocarp tree in Sabah, Malaysia (Mantodea, Metallyticidae)

– Written by: Lubbers *et al.*

To read please go to:

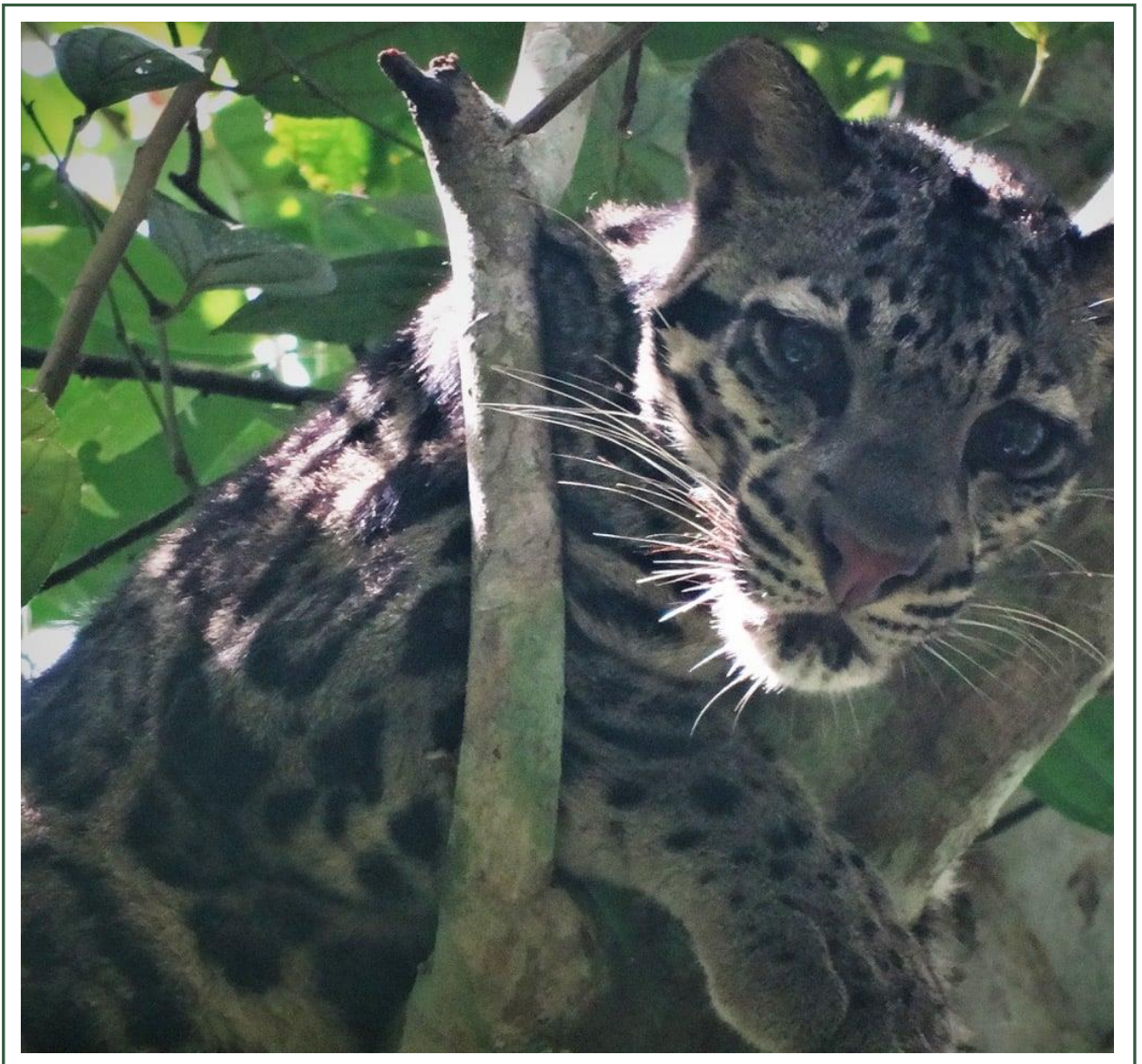
<https://jurcon.ums.edu.my/ojs/ums/index.php/jtbc/article/view/2657>



Picture of the Month

A Sunda clouded leopard spotted hanging out in a tree by DGFC.

- Image courtesy of Richard Burger.





Danau Girang Field Centre

Danau Girang Field Centre was opened in July 2008. It is located in the Lower Kinabatangan Wildlife Sanctuary, Sabah, Malaysia.

Danau Girang is owned by the Sabah Wildlife Departments and supported by Cardiff University. Its purpose is to further scientific research with the aim of contributing to long-term conservation projects in the area and develop a better understanding of our environment and the living things we share it with.

Contact Us:

Danau Girang Field Centre

Lot 6

The Jungle

Lower Kinabatangan Wildlife Sanctuary

Sabah

Email: contact@dgfc.life

Web Page Address: www.dgfc.life

Editor: Tyler Cuddy

Director of Publication: Benoit Goossens

The opinions expressed in this newsletter do not necessarily reflect the views or policies of Cardiff University.

