



# The Jungle Times

Independent newsletter of:



Est. 2008

Issue: 117

## Inside this issue:

Page 2: Arrivals

Page 3: Departures

Page 4: Gaya Island update

Page 5: Science Corner

Page 6: Conservation Corner

Page 7: Game

## Page 4: Gaya Island update



## Page 6: Science Corner





# Arrivals

## Simon Lehnert

This month we welcome Simon, from Switzerland, who studies Environmental Sciences. He has joined DGFC for 3 weeks to help out with all of the projects. He has recently completed a semester in Singapore and his interests are birdwatching, photography and reading.

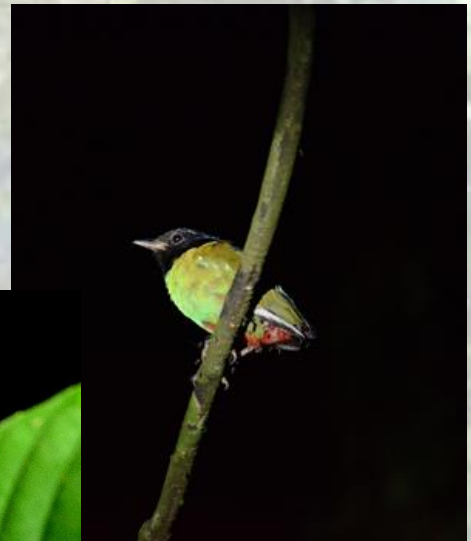




# Departures

## Simon Lehnert

After three weeks we say goodbye to Simon. The highlight of Simon's time here was meeting new people and experiencing living in such close proximity to the wildlife around DGFC. He now returns to Switzerland to celebrate his birthday, before continuing his last semester of his final year at university. We wish him best of luck in the future and thank him for all his help at DGFC!





# Gaya Island update

Meg has recently collected 5 species of seagrass (*Enhalus acoroides*, *Halophilia ovalis*, *Halodule uninervis*, *Caulerpa serrulata*, *Cymodocea rotundata*) for her project which she has now planted in tanks. Over the coming months she will be monitoring their growth and survival rates and hopes to transfer these plants into the bay in the next couple of months.



Charlie has got 20 camera traps placed in the forest and has got some interesting data. The most commonly seen animals so far are *Macaca fascicularis* and *Sus barbatus*, with other animals like *Megapodius cumingii*, *Rattus norvegicus* and *Varanus salvator* appearing occasionally. Next month she will have finished her pilot studies and will start recording real data for her final report.





# Science Corner

Hearn, A.J., Cushman, S.A., Goossens, B., Ross, J., Macdonald, E.A., Hunter, L.T.B and Macdonald, W. (2019). Predicting connectivity, population size and genetic diversity of Sunda clouded leopards across Sabah, Borneo. *Landscape Ecology* doi: [10.1007/s10980-018-0758-1](https://doi.org/10.1007/s10980-018-0758-1).

The team recently had another publication released in *Landscape Ecology*, in association with colleagues from WildCRU and US Forest Service. The study utilised two models to predict population size, connectivity and genetic diversity of the Sunda clouded leopard across Sabah. Both models (an empirically optimised, movement-based model, and an expert-opinion derived model) showed a similar overall pattern; identifying a large patch of core habitat with high predicted connectivity in Sabah's central forest region, and agreed on the location and extent of the main isolated habitat fragments. Core areas are comprised of large and unfragmented forest blocks, and areas of reduced forest cover comprise barriers among patches of predicted remaining habitat.

The paper suggests that future research should assess how different landscape management approaches will impact the clouded leopard.





# Conservation Corner

## Asian leaf turtle



*Emys dentata*. The Asian leaf turtle has a large geographical range, extending from eastern India, Thailand, Malaysia, to the Philippines. Its preferred habitat is shallow streams, ponds, and marshlands. Juveniles are more aquatic than the predominantly terrestrial adults. They are omnivorous, feeding on ground plants and invertebrates, but will also scavenge rotting flesh. Other notable behaviours are that they will defecate if threatened and they dig their nests in the ground. This near threatened species of forest turtle is relatively common in the pet trade. This particular individual had moss growing all over its shell!



# Pop quiz!

How heavy can an estuarine crocodile grow?

- a) 100kg
- b) 750kg
- c) 1200kg
- d) 2100kg



What is the conservation status of the Sunda pangolin?

- a) Least concern
- b) Critically endangered
- c) Near Threatened
- d) Extinct in the wild

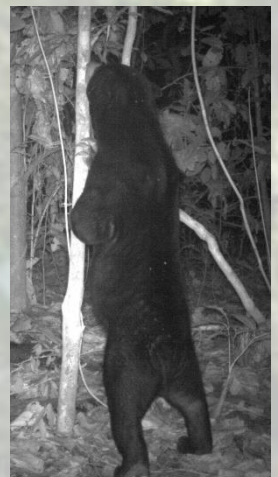


Which statement is false?

- a) Borneo is home to 5 felid species
- b) The clouded leopard has the largest jaw to skull size ratio of any cat
- c) Rhinoceros hornbills are only found in primary rainforest
- d) Tarsiers are the only fully carnivorous primates

What do sun bears eat?

- a) Honey, insects, small mammals, small birds, small reptiles, fruit
- b) Honey, bees, small birds, small reptiles
- c) Honey, insects, small mammals, small reptiles, fruit
- d) Insects, small mammals, small birds, small reptiles, fruit, fish





## Danau Girang Field Centre

*Danau Girang Field Centre was opened in July 2008.  
It is located in the Lower Kinabatangan Wildlife Sanctuary,  
Sabah, Malaysia.*

*Danau Girang is owned by the Sabah Wildlife Department  
and supported by Cardiff University. Its purpose is to further  
scientific research with the aim of contributing to long-term  
conservation projects in the area, and develop a better  
understanding of our environment and the living things we  
share it with.*

### **Danau Girang Field Centre**

Lot 6  
The Jungle  
Lower Kinabatangan Wildlife Sanctuary  
Sabah

Email: [danaugirangfieldcentre@yahoo.com](mailto:danaugirangfieldcentre@yahoo.com)

*Editors: Ben Pridmore, Jessica Shuttleworth,  
Jamie Owen and Elizabeth Witcombe*

*Director of Publication: Benoit Goossens*

The opinions expressed in this newsletter do not necessarily reflect the views or policies of Cardiff University.

